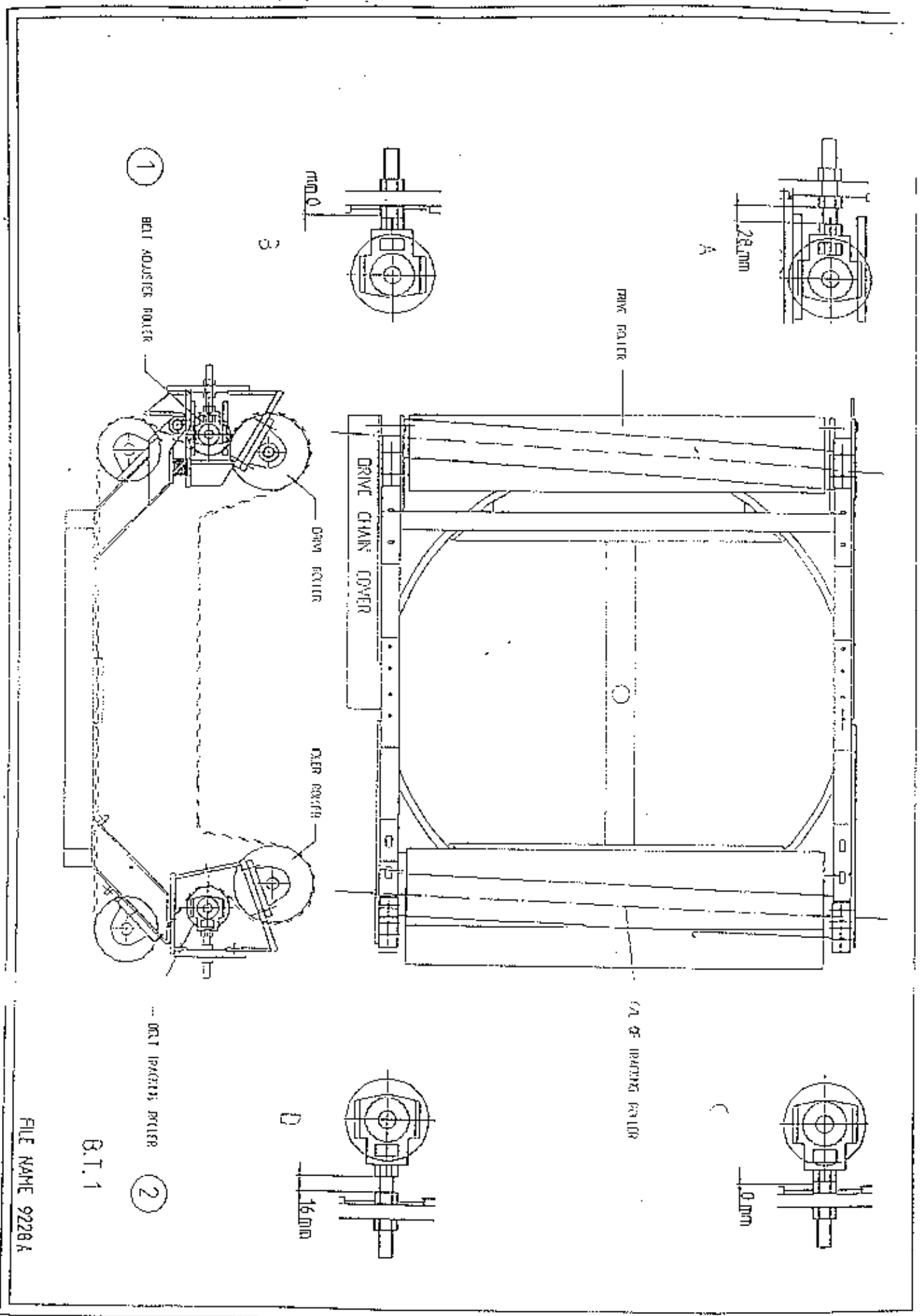
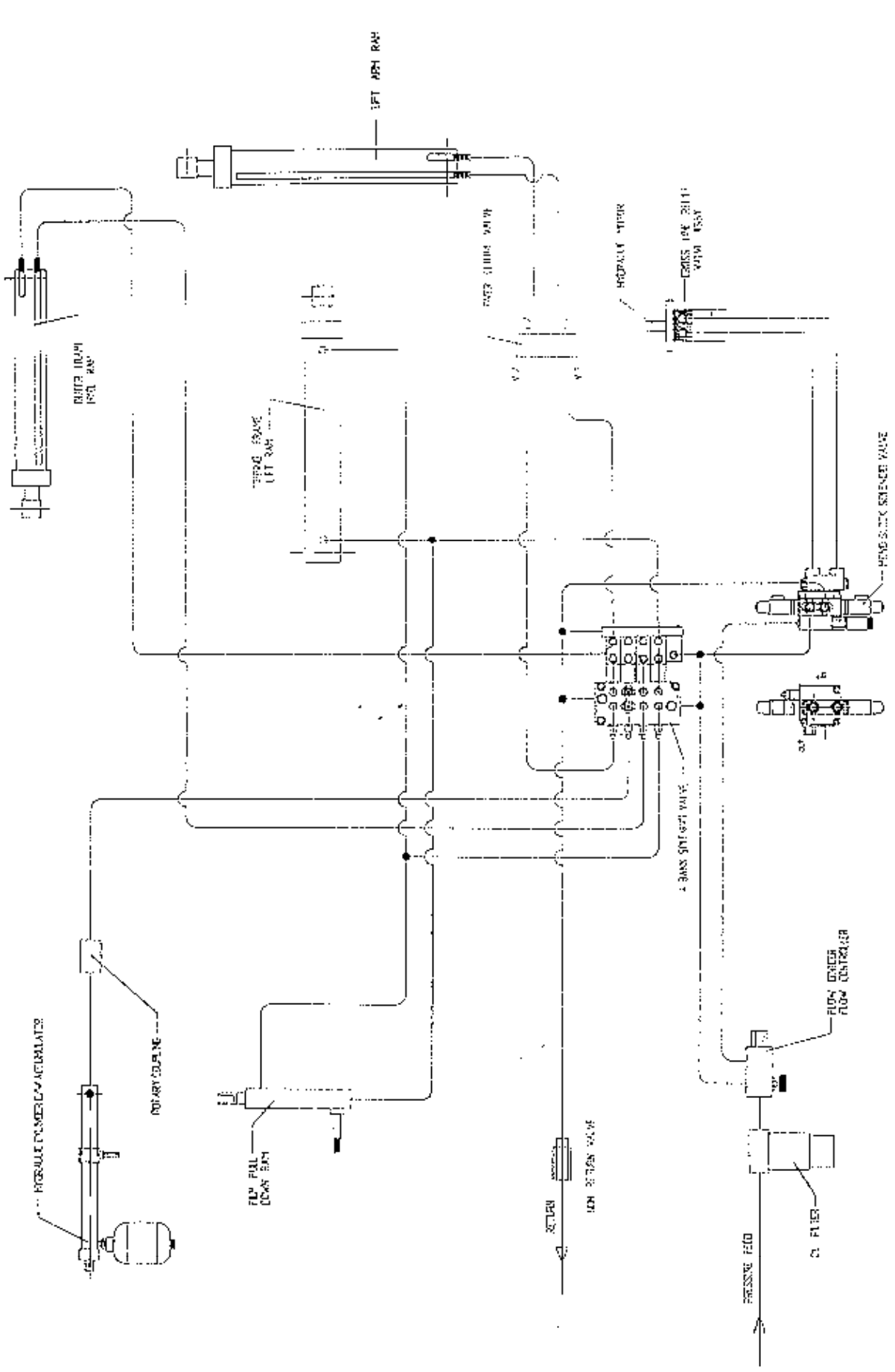


**TANCO AUTOWRAP**  
1070A MODEL 1998  
C/W LOADING ARM  
OPERATORS HANDBOOK  
AND  
PARTS-LIST  
WD66-1070-A-M0398



# FANCO AUTOWRAP 1070 MODEL HYDRAULIC CIRCUIT DIAGRAM



FILE NAME W071-FC'S

**TANCO AUTOWRAP 1070 MODEL  
HYDRAULIC COMPONENTS**

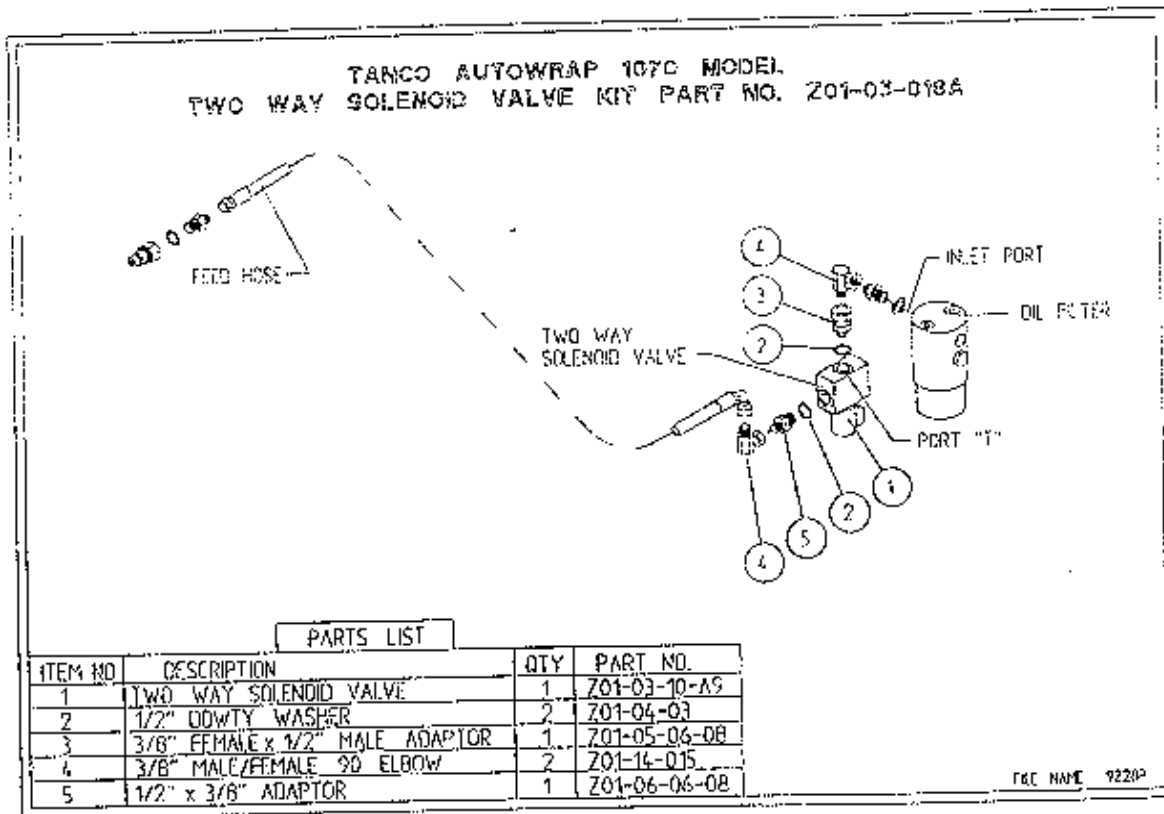
**PARTS LIST**

ITEM NO.	DESCRIPTION	QTY	PART-NO.
1	4 BANK SOLENOID VALVE	1	Z01-03-A1070
2	HYDRAULIC MOTOR C.L.	1	Z01-02-RF200
3	CROSS LINE RELIEF VALVE	1	Z01-03-004
4	1/2" B.S.P. BOTTOM BANJO BOLT (SPECIAL)	2	Z01-03-002B
5	HYDRULIC RAM (TIPPING FRAME)	1	Z01-01-AR687
6	1/2" DOWTY WASHER	10	Z01-04-03
7	1/2" NON RETURN VALVE	1	Z01-03-017
8	1/2" X 3/8" ADAPTOR	4	Z01-06-06-08
9	1/2" X 1/2" ADAPTOR	3	Z01-06-08-08
10	1/2" MALE END Q/R COUPLING	2	Z01-15-081
11	HYD. RAM (FOR LIFT ARM)	1	Z01-01-AW
12	108" ST/90 3/8" D/W HOSE	2	Z38-R2-108-S9
13	72" ST/90 3/8" D/W HOSE	3	Z38-R2-72-S9
14	84" ST/90 3/8" D/W HOSE	1	Z38-R2-84-S9
15	24" ST/90 3/8" D/W HOSE	2	Z38-R2-24-S9
16	36" ST/90 3/8" D/W HOSE	1	Z38-R2-36-S9
17	12" ST/90 3/8" D/W HOSE	1	Z38-R2-12-S9
18	3/8" MALE X 3/8" MALE X 3/8" FEMALE 'T' PIECE	2	Z01-12-002
19	48" ST/90 3/8" D/W HOSE	1	Z38-R2-48-S9
20	FILTER	1	Z01-24-08
21	3/8" X 3/8" ADAPTOR FITTED WITH 0.06" RESTRICTOR	1	Z01-03-40
22	18" ST/90 3/8" D/W HOSE	2	Z38-R2-18-S9
23	108" ST/90 1/2" D/W HOSE	2	Z12-R2-108-S9
24	HYD RAM D/A (PULL DOWN ARM)	1	Z01-01-AW25
25	1/4" DOWTY WASHER	1	Z01-04-01
26	1/4" X 3/8" ADAPTOR	1	Z01-06-04-06
27	3/8" MALE X 3/8" FEMALE ADAPTOR	2	Z01-05-06-06
28	3/8" MALE/FEMALE 90 ° ELBOW	4	Z01-14-015
29	IN LINE FLOW DIVIDER	1	Z01-03-10-A6
30	3/8" DOWTY WASHER	11	Z01-04-02
31	3/8" X 3/8" ADAPTOR	10	Z01-06-06-06
32	3/8" MALE X 3/8" MALE X 3/8" MALE 'T' PIECE	2	Z01-11-002
33	OVER CENTRE VALVE	1	Z01-03-10-A8
34	30" ST/90 3/8" D/W HOSE	2	Z38-R2-30-S9
35	COPPER WASHER	2	Z01-04-15
36	SINGLE BANK SOLINOID VALVE	1	Z01-03-A1070
37	3/8" BULKHEAD ADAPTOR	1	Z01-06-05-06
38	120" ST/90 3/8" D/W HOSE	2	Z38-R2-120-S9
39	96" ST/90 3/8" HOSE	2	Z38-R2-96-S9
40	48" ST/ST 3/8" D/W HOSE	2	Z38-R2-48-SS
41	14" ST/90 3/8" D/W HOSE	2	Z38-R2-14-S9
42	HYD RAM (FOR SQUEEZ ARM)	1	Z01-01-AW1070
43	CUT AND START	1	Z01-01-ANH
44	ROTARY COUPLING	1	Z01-02-AWR
45	3/8" BANJO COUPLING	1	Z01-19-062
46	3/8" SINGLE TOP BANJO BOLT	1	Z01-20-062

# INSTRUCTION FOR FITTING TWO WAY SOLENOID VALVE TO TANCO AUTOWRAP 1070 MODELS.

REQUIRED WHEN OPERATING MACHINES ON TRACTORS WITH CLOSED CENTRE HYDRAULIC SYSTEMS.

- 1 Disconnect st/90 hose from inlet port on oil filter.
- 2 Connect port "T" on solenoid valve assembly to inlet port on oil filter.
- 3 Reconnect st/90 hose to port "P" on solenoid valve.
- 4 Connect 2 pin female connector to existing 2 pin connector at junction box.
- 5 Change the seventh controller function setting from n to J. See instruction manual for further information.



TANCO AUTOWRAP  
CONSTANT INDEXING DRIVE ASSEMBLY

PARTS LIST

ITEM NO.	DESCRIPTION	QTY	PART-NO.
1.	TURNTABLE ASSY.	1	WD610-TA2
2.	TIPPING FRAME ASSY.	1	WD64-TF
3.	DRIVE ROLLER ASSY.	1	WD610-BRD1
4.	GEAR BOX	1	Z01-25-300
5.	M12 HEX HD SET x 30mm LONG	4	Z26-0825
6.	12mm DIA SPRING WASHER	7	Z12-02-12
7.	CHAIN TENSIONER	2	WD60-CT
8.	CENTRE SPROCKET ASSY 27 TOOTH	1	WD64-CSA
9.	M12 HEX HD SET x 25mm LONG	3	Z26-0815
10.	46 TOOTH SPROCKET	1	Z06-D64-46S
11.	M10 HEX HD SET x 25mm LONG	1	Z26-0615E
12.	10mm DIA SPRING WASHER	5	Z12-02-10
13.	RETAINING COLLAR	3	WD623-071
14.	CHAIN 3/4" PITCH x 87 PITCHES	1	Z09-AW-5
15.	ROSTA TENSIONING UNIT ARM	1	Z06-454
16.	SPROCKET	1	Z06-D610-1620
17.	M10 HEX HD BOLT x 65mm LONG	1	Z26-0671B
18.	SPROCKET	1	Z06-D610-20K
19.	M10 LOCKNUT	1	Z23-10
20.	CHAIN 3/4" PITCH x 50 PITCHES	1	Z09-AW-52
21.	CHAIN 3/4" PITCH x 98 PITCHES	1	Z09-AW-54
22.	CHAIN STRIPPER	1	WD610-185
23.	SPACER	2	WD610-207
24.	10mm DIA FLAT WASHER	6	Z10-02-10
25.	M10 HEX HD SET x 30mm LONG	3	Z26-0628
26.	KEY 12mm x 10mm x 55mm LONG	1	WD610-198
27.	M10 CUP SQ. SCREW x 30mm LONG	1	Z13-112
28.	M10 HEX HD BOLT x 80mm LONG	1	Z26-0691B
29.	CHAIN GUARD (SMALL)	1	WD610-CGS1
30.	CHAIN GUARD (LARGE)	1	WD610-CGL1
31.	M10 HEX HD SET x 25mm LONG (TUFLOCK)	3	Z26-0618
32.	SPROCKET/BACKET PIVOT SHAFT	1	WD610-71
33.	1" DIA UNC LOCKNUT	1	Z23-251
34.	1" H/D FLAT WASHER	2	Z10-02-25
35.	LOCKING PLATE	2	WD623-060
36.	CHAIN GUIDE	2	WD610-199
37.	SPROCKET	1	Z06-D65-1316S
38.	M6 GRUB SCREW	2	Z28-006
39.	CHAIN TENSIONER BRACKET	1	WD610-CTB1
40.	CHAIN TENSIONER BLOCK ASSY INNER	1	WD610-TBI1
41.	CHAIN TENSIONER BLOCK ASSY OUTER	1	WD610-TBO1
42.	SPRING 14.5MM O.D. X 1.6MM WIRE X 60MM LONG	1	Z07-48
43.	M10 HEX HD SET x 40mm LONG	1	Z26-0645
44.	OILITE BUSH	2	Z06-106
45.	GUARD	1	WD64-021
46.	GUARD	1	WD64-020
47.	M6 HEX HD SETS x 20mm LONG	6	Z26-0208
48.	8mm DIA SPRING WASHER	6	Z12-02-08
49.*	MAGNET	2	D6043
50.*	M6 CSK HD SET x 35mm LONG	2	Z13-132
51.*	6mm DIA FLAT WASHER	2	Z11-02-06
52.*	M6 LOCKNUT	2	Z23-06
53.	SPIRAL PIN	2	Z03-23-062

\* DENOTE ADDITIONAL ITEMS REQUIRED FOR AUTOMATIC MACHINES

**TANCO AUTOWRAP      MODELS**  
**PARTS LIST**

ITEM	DESCRIPTION	QTY	PART NO.
1	CHASIS ASSY	1	WD67-CHA
2	STUB AXLE (LONG)	1	Z04-0336
3	WHEELS (STANDARD WIDTH)	2	Z04-0336
	(WIDE)	2	Z04-04
4	WHEELS NUTS (WIDE)	10	M22AWNA
5	BISSSEL PIN	1	WD60-861
6	M10 HEX NUT	3	Z18-10
7	HYD RAM	1	Z01-01AR687
8	RAM BOTTOM PIVOT PIN	1	Z03-02-330
9	RAM TOP PIVOT PIN	1	Z03-03-50
10	2" X 1/4" SPLIT PIN	2	Z03-21-29
11	TIPPING FRAME ASSY	1	WD64-TF
12	TIPPING FRAME PIVOT PIN C/W GREASE NIPPLE	2	Z03-01-9055
13	BELT GUIDE ASSEMBLY	1	WD610-BG1
14	BELT GUIDE ASSEMBLY	1	WD610-BG2
15	INNER BEARING	2	M22AB-209
16	SCREW JACK ASSEMBLY (WELD ON)	1	WD60-JA
17	M8 HEX HD SETS X 20MM LONG	4	Z26-039S
18	M8 HEX NUTS	14	Z18-08
19	6MM DIA FLAT WASHERS (MUD FLAP)	8	Z11-02-081
20	8MM DIA SPRING WASHERS	12	Z12-02-08
21	SCRAPER	2	WD60-711
22	STUB AXLE SHORT	1	Z04-032
23	4 MM "R" CLIP	1	Z36-02
24	RING HITCH ASSY (LONG)	1	WD65-HIT
25	M16 HEX HD SET X 25MM LONG	4	Z26-124S
26	M16 LOCKNUTS	4	Z23-16
27	M10 HEX HD SET X 25MM LONG	2	Z26-060SY
28	10MM DIA MACHINED FLAT WASHER	2	Z11-02-10
29	TURN TABLE ASSY	1	WD610-TA2
30	10MM DIA SPRING WASHER	5	Z12-02-10
31	SUPPORT WHEELS	4	Z06-466
32	AXLE ASSY C/W GREASE NIPPLE	4	Z03-22-AW/AX
33	M20 LOCKNUTS	4	Z23-20
34	TURN TABLE COVER PLATE	1	WD60-093
35	SPACER	8	WD60-198
36	OUTER BEARING	2	M22AB-206
37	FILM TRANSPORT BRACKET	1	WD60-FTB1
38	CLAMPING PLATE	1	WD60-933
39	M10 HEX HD BOLT X 140MM LONG	3	Z26-0726B
40	PLASTIC CAP	2	Z32-08
41	M10 HEX HD BOLT X 80MM LONG	1	Z26-0691B
42	M10 LOCK NUT	1	Z23-10

TANCO AUTOWRAP      MODEL  
 TURNTABLE CHAIN DRIVE ASSEMBLY

PARTS LIST

ITEM NO	DESCRIPTION	QTY	PART NO
1	TIPPING FRAME ASSY	1	WD64-TF
2	38 TOOTH x 1" PITCH SPROCKET	1	Z06-D64-38
3	CHAIN 1" PITCH x 54 PITCHES	1	Z09-AW6
4	SPINDLE SPACER	1	WD64-040
5	KEY 5/8" SQ x 50mm LONG	2	WD64-052
6	15 TOOTH x 1" PITCH SPROCKET	1	Z06-I60-046
7	KEY 5/16" SQ x 45mm LONG	1	WD64-053
8	LOCKING COLLAR	1	WD623-071
9	10mm DIA SPRING WASHER	1	Z12-02-10
10	3/8" UNC HEX HD SET x 1" LONG	1	Z27-023S
11	2" DIA FLANGE BEARING C/W CAM LOCK COLLAR	1 1	
12	5/8" UNF HEX HD SET x 2" LONG	3	Z06-49EC
13	5/8" UNF LOCKNUT	4	Z31B-064
14	HYDRAULIC MOTOR	4	Z20-10
15	HYDRAULIC MOTOR MOUNTING PLATE	1	Z01-02-RF200
16	M12 x 50mm ALLEN HD C/S SCREW	1	WD64-001
17	M12 HEX HD SET x 30mm LONG	4	Z13-5-12X50
18	12mm DIA SPRING WASHER	4	Z26-082S
19	12mm DIA FLAT WASHER	6	Z12-02-12
20	M16 THREADED BAR x 150mm LONG	6	Z10-02-12
21	M16 HEX NUTS	1	WD64-038
22	SPACER	4	Z18-16
23	M12 LOCKNUTS	1	WI60-093
24	M12 HEX HD SET x 50mm LONG	4	Z23-12
25	DRIVE CHAIN GUARD	2	Z26-086S
26	M12 HEX NUT	1	WD66-DCG
27	M6 HEX NUT	2	Z18-12
28	M6 90 DEGREE GREASE NIPPLE	1	Z18-06
29	M12 GRUB SCREW x 16mm LONG	1	Z39-65
		2	Z28-012



TANCO AUTOWRAP  
BALE BELT ROLLER MOUNTING BRACKETS

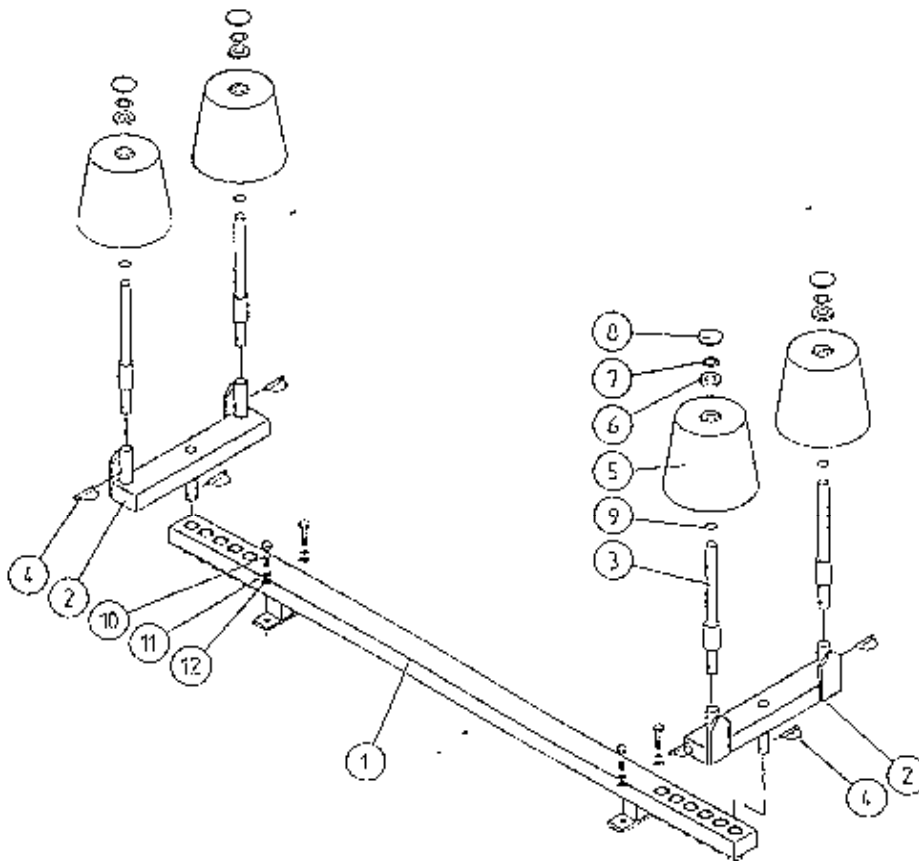
PARTS LIST

ITEM NO.	DESCRIPTION	QTY	PART-NO.
1.	TURNTABLE ASSY.	1	WD610-TA2
2.	ROLLER MOUNTING BRACKET (SWIVEL)	1	WD610-RMS1
3.	ROLLER MOUNTING BRACKET (FIXED)	1	WD610-RM1
4.	ROLLER MOUNTING BRACKET (FIXED)	1	WD610-RM2
7.	BIG ROLLER ASSY (DRIVE)	1	WD610-BRDD1
8.	BIG ROLLER ASSY (IDLER)	1	WD610-BRI
9.	ROLLER ASSY (IDLER)	2	WD65-BRJ
10.	TRACKING ROLLER ASSY (LONG)	2	WD610-TR1
11.	1 1/4" PILLOW BLOCK BEARING	6	Z06-485
12.	M14 HEX HD SET x 45mm LONG	8	Z26-103S
13.	14mm DIA FLAT WASHER	24	Z11-02-14
14.	14mm DIA SPRING WASHER	24	Z12-02-14
15.	SLIDING BEARING STI	4	Z06-47ST
16.	M20 THREADED BAR x 135mm LONG	3	WD610-77
17.	M20 HEX NUTS	16	Z18-20
18.	12mm DIA. SPRING WASHER	12	Z12-02-12
19.	12mm DIA. FLAT WASHER	12	Z11-02-10
21.	SWIVEL BRACKET PIVOT PIN J-50	1	Z03-03-50
22.	2" x 1/4" SPLIT PIN	1	Z03-21-29
23.	RETAINING PLATE	2	WD610-30
24.	M12 HEX HD SETS x 35mm	8	Z26-083S
25.	M12 HEX NUTS	10	Z18-12
26.	BUFFER 50MM DIA x 42mm LONG	4	Z40-275
27.	BALE BELT 1130mm WIDE x 4470mm LONG	1	Z05-02AWV1-93
28.	CUT AND START MOUNTING FRAME	1	WD610-CSM
29.	M14 HEX NUTS	8	Z18-14
30.	M12 HEX HD SETS x 25mm LONG	4	Z26-081S
31.	M14 HEX HD SET x 50mm LONG	8	Z26-104S
32.	M20 THREADED BAR x 105mm LONG	1	WD610-113
33.	40mm DIA PILLOW BLOCK BEARING	2	Z06-48EC-40

**TANCO AUTOWRAP TRAILED MODELS****FILM DISPENSING SYSTEM**  
**PARTS LIST**

ITEM NO:	DESCRIPTION:	QTY:	PART NO:
1	FILM DISPENSER UNIT MK9 (35% STRETCH)	1	D6161
2	SLEEVE	1	D52012-95
3	M12 X 80 HEX BOLT	2	Z26-0901B
4	SLAVE ROLLER LONG	1	Z06-SR95-L
5	SLAVE ROLLER PIVOT	2	WD64-SRP
6	DISPENSER MAST	1	WD69-DM
7	M16 HEX NUT	8	Z18-16
8	16MM SPRING WASHER	8	Z12-02-16
9	80MM M16 'U' BOLTS	4	Z35-52
10	DISPENSER MAST MOUNTING BRACKET	1	WD67-DMM
11	M12 X 40 HEX SET	2	Z26-084S
12	M12 HEX NUT	2	Z18-12
13	5 X 45 ROLL PIN	2	Z03-21-15
14	FILM SPOOL LOWER	1	WD67-FSL
15	FILM MAST CONE	2	Z06-45-03
16	CIRCLIP	2	Z28-525
17	FILM SPOOL UPPER	1	WD67-FSU
18	12MM SPRING WASHER	4	Z12-02-12
19	M12 X 30 HEX SET	4	Z26-082S
20	1/8 B.S.P. STRAIGHT GREASE NIPPLE	1	Z39-60
21	M16 LOCKNUT	1	Z23-16
22	FILM PULL DOWN BRACKET ASSEMBLY	1	WD65-FPDB
23	1/4" X 2" SPLIT PIN	2	Z01-23-29
24	PLASTIC CAP	2	Z32-07
25	HYDRAULIC RAM (PULL DOWN)	1	Z01-01-AW25
26	1" G.B. PLASTIC CAP	2	Z32-14
27	M12 X 50 HEX SET	1	Z26-086S
28	M12 LOCKNUT	1	Z23-12
29	3/4" FLAT WASHER	1	Z10-02-19
30	FILM PULL DOWN ARM ASSEMBLY	1	WD65-FPDA
31	RETAINING WASHER	1	WD60-859
32	ROLLER	1	WD60-866
33	FILM GUARD	1	WD67-FG
34	M6 GREASE NIPPLE	1	Z39-66
35	ADJUSTER HANDLE	1	Z35-55

TANCO AUTOWRAP 1060 MODELS  
END ROLLER MOUNTING BRACKET ASSY



PARTS LIST

ITEM NO	DESCRIPTION	QTY	PART-NO.
1.	CROSS BEAM ASSY	1	WD610-CBA
2.	END ROLLER MOUNTING BRACKET	2	WD610-RMB
3.	END ROLLER SHAFT ASSY	4	WD610-RSA
4.	10mm DIA "D" LINCH PIN	6	Z38-03
5.	SIDE ROLLER	4	Z06-AWR
6.	BEARING 25mm I.D.	4	Z06-AWRB-93
7.	THRUST WASHER	4	WD60-292
8.	PLASTIC CAP	4	Z06-AWRC
9.	CIRCLIP	4	Z28-525
10.	M12 HEX ID SET x 30mm LONG	4	Z26-082S
11.	12mm DIA SPRING WASHER	4	Z12-02-12
12.	12mm DIA FLAT WASHER	4	Z11-02-10

**TANCO AUTOWRAP 1070 MODEL  
LIFT ARM ASSY  
PARTS LIST**

ITEM NO.	DESCRIPTION	QTY	PART-NO
1	CHASSIS ASSY	1	WD6-1-CHA
2	INNER ARM ASSY	1	WD75-LAI
3	OUTER ARM ASSY	1	WD75-LAO
4	SAFETY SUPPORT ARM	1	WD60-319
5	BALE STOP ASSY	1	WD610-LAS1
6	HYDRAULIC RAM (MAIN ARM)	1	Z01-01-AW1070
7	RAM BOTTOM PIVOT PIN	2	Z03-02-330
8	RAM TOP PIVOT PIN	1	Z03-D66-90
9	M10 HEX HD SET x 20mm LONG	3	Z26-060ST
10	10mm DIA SPRING WASHER	5	Z12-02-10
11	10mm DIA FLAT WASHER	3	Z11-02-10
12	BUFFER 50mm DIA x 40mm LONG	2	Z40-20
13	M10 HEX NUT	2	Z18-10
14	1/4" Ø SPLIT PIN x 2" LONG	4	Z03-21-29
15	MAIN FRAME PIVOT PIN C/W GREASE NIPPLE	2	Z03-01-905
16	HYDRAULIC RAM (OUTER F	1	Z01-01-140S
17	RAM TOP/BOTTOM PIVOT PIN	2	Z03-D66-145
18	BALE STOP RETAINING PIN	1	Z03-04-73
19	7/16" Ø LINCH PIN	1	Z03-22-06

WD64-PL25

TANCO AUTOWRAP 199B MODEL

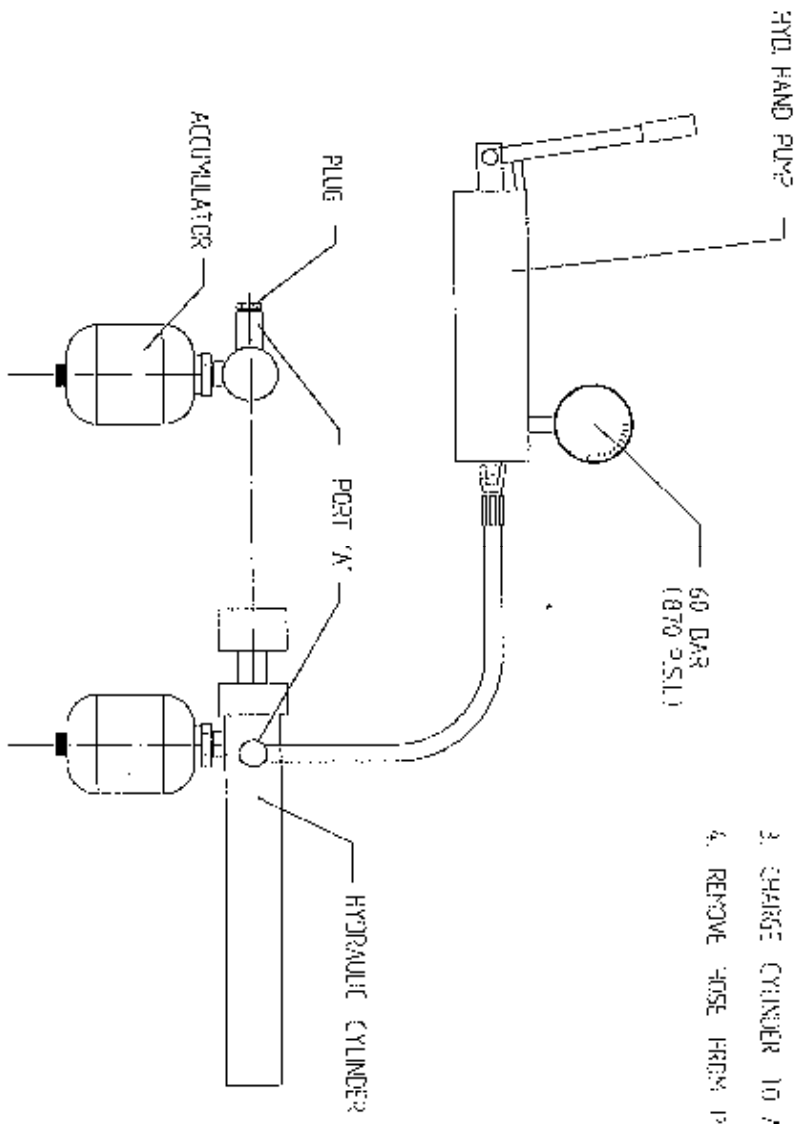
HYDRAULIC BALE RAMP

ITEM	DESCRIPTION:	QTY:	PART NO:
1	HYDRAULIC BALE RAMP ASSY	1	WD65-HBRF
2	RAMP MAIN PIVOT PIN C/W GREASE NIPPLE	2	Z03-01-905
3	M10 HEX HD SET X 20mm LONG TUFLOCK	2	Z26-060ST
4	10MM DIA MACHINED FLAT WASHER	2	Z11-02-10
5	10MM DIA SPRING WASHER	12	Z12-02-10
6	BALE MAT	1	Z05-02-BRH
7	M10 X 30MM LONG CUP HD. SQ BOLTS	5	Z13-112
8	M10 HEX NUTS	5	Z18-10
9	HYDRAULIC RAM C/W ACCUMULATOR	1	Z01-01-AWD
10	SPAREX PIN	1	Z03-04-74
11	SPAREX PIN	1	Z03-04-73
12	7/16 DIA LINCH PIN	2	Z03-22-06
13	ACCUMULATOR MOUNTING PLATE	1	WD65-AMP
14	CLAMPING PLATE	1	WD65-231
15	M8 HEX HD BOLT X 80MM LONG	4	Z26-050B
16	M8 LOCKNUT	4	Z23-08
17	M28 X 1.5 PITCH HEX NUT	1	Z18-28

## FAULT FINDING

PROBLEMS.	REMEDY.
1. Drive Roller and Bale belt not driving	Check and replace shear Pins in sprocket on drive roller.
2. Film Breaking	Wash off dispenser and slave rollers. Change roll of film. Use recommended films only.
3. Film not wrapping evenly on bale.	Adjust film mast so centre of film roll is aligned with centre of bale.
4. Film Tearing on Ramp.	Check for sharp edges and remove.
5. Bale Skidding on Ramp.	Fit Hessian Bag or piece of carpet to Ramp.
6. Film Dispenser not Pre-Stretching Film.	Check that both Rollers turn when one is turned by hand. If not, fit new gears or replace unit.
7. Tyres coming off 4" platform Support Wheels.	Replace Wheels - Reduce speed below 30 r.p.m. - Do not grease path of wheels on platform. Check that bale does not get trapped between arms and turntable when being loaded.  If this happens lower arm and start again.
8. Hydraulic Bale Ramp not returning to raised position after tipping off bale.	See instructions for recharging hydraulic cylinder.
9. Bale Belt Tracking Adjustment	
(i) Ensure vertical rollers (plastic) are in tight on the bale. Remember that the bale will reduce in size during wrapping and, on the round bales in particular, the corners will become rounded so that the bale will tend to move sideways due to centrifugal forces. Now, if the plastic rollers are too far apart, the bale will move against one of the plastic rollers causing the belt to move in the opposite direction. Always adjust the vertical plastic rollers so that they keep the bale central on the belt.	
(ii) Adjust bale stop on lift arm so that bale is loaded centrally onto platform.	
(iii) Check that bale belt is fitted so arrow points in direction of travel.	
(iv) Check that both 8" rollers underneath the bale belt are parallel to each other. Remember the golden rule - a belt will always move up a slope: So, if the belt continually moves to our side, adjust idler roller to a narrower setting on the opposite side to which the belt travels.	
(v) Check that gripface strips are securely fixed to the roller and have not moved out of alignment.	
(vi) Check that is the same measurement each side by running a string around the belt and measuring it. If one side is longer than the other replace the belt.	

# TANCO AUTOWRAP - HYDRAULIC CUT AND START INSTRUCTIONS FOR RECHARGING HYDRAULIC CYLINDER



1. REMOVE PLUG FROM PORT "A".
2. CONVERT HOSE FROM 1/4" (ANG. PUMP TO PORT "A").
3. CHARGE CYLINDER TO A PRESSURE OF 60 BAR (870 P.S.I.)
4. REMOVE HOSE FROM PORT "A" AND REFIT PLUG.

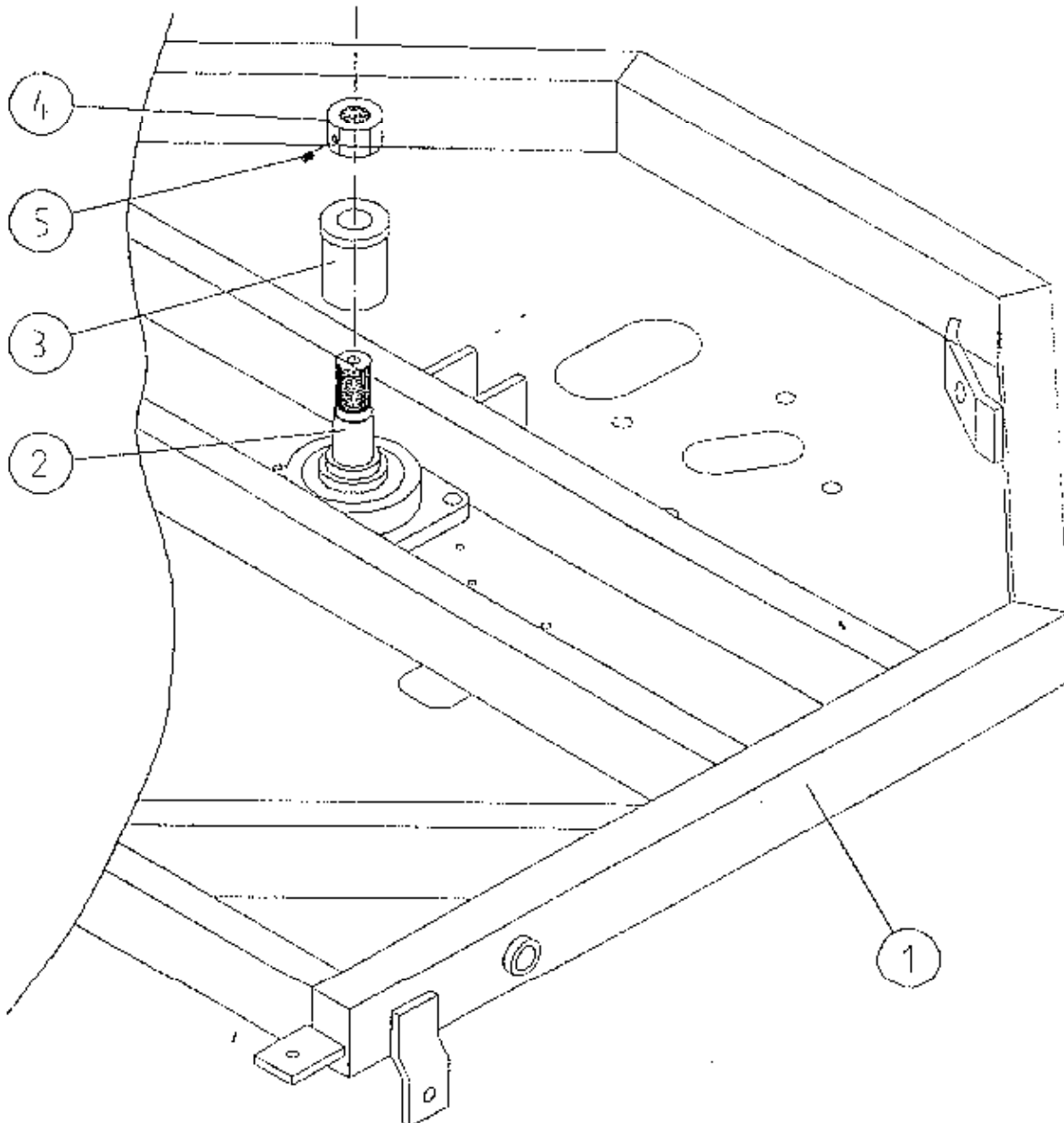
FILE NAME: WD67PL-845

## TANCO AUTOWRAP

## TURNTABLE LOCKING ARRANGEMENT

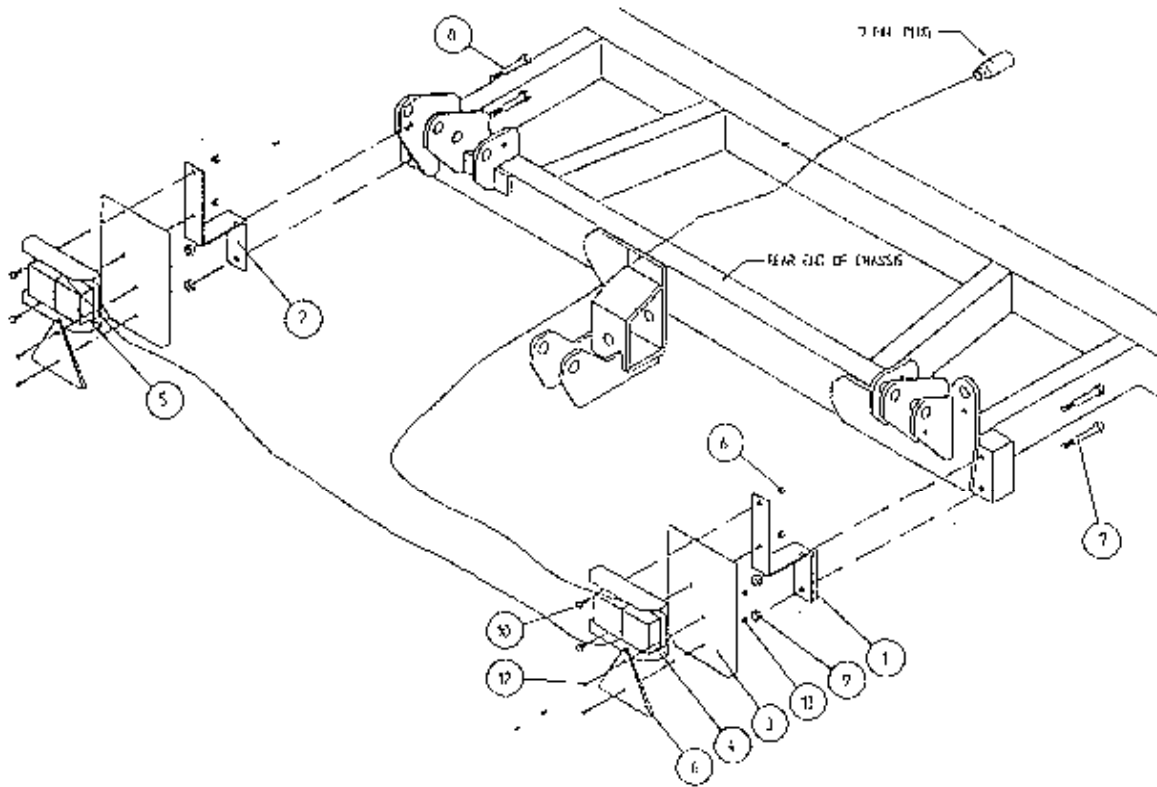
## PARTS LIST

ITEM	DESCRIPTION	QTY	PART NO
1	UNDERSIDE OF TIPPING FRAME	1	WD64-TF
2	TURNTABLE CENTRE SHAFT	1	WD64-C02
3	SPINDLE SPACER	1	WD67-SS
4	1 1/4" UNC HEX NUT	1	Z18-300
5	M8 GRUB SCREW X 6MM LONG	1	Z28-007



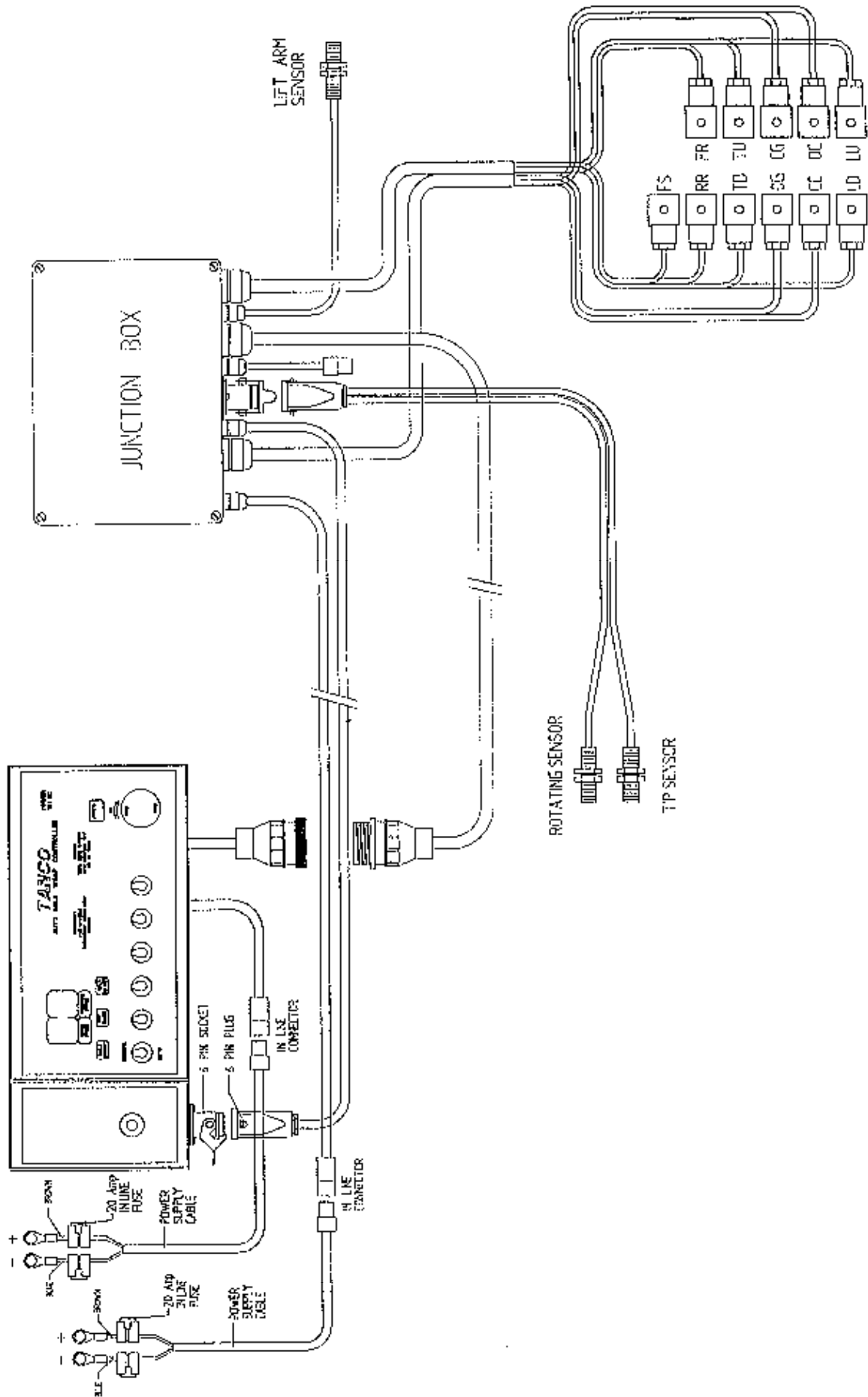


TANCO AUTOWRAP TRAILED MODELS  
LIGHTING KIT



ITEM NO	DESCRIPTION	QTY	PART-NO.
1.	LIGHT MOUNTING BRACKET RHS	1	WD60-LMB
2.	LIGHT MOUNTING BRACKET LHS	1	WD60-899
3.	LIGHT MOUNTING PLATE	2	WD60-898
4.	LIGHT CLUSTER RHS	1	Z05-30R
5.	LIGHT CLUSTER LHS	1	Z05-30L
6.	TRIANGULAR REFLECTOR	2	Z04-62
7.	M12 HEX HD BOLT X 100 LONG	2	Z26-092B
8.	M12 HEX HD BOLT X 90 LONG	2	Z06-091B
9.	M12 LOCKNUT	4	Z23-12
10.	M8 HEX HD SET X 20 LONG	4	Z26-39S
11.	M8 LOCKNUT	4	Z23-08
12.	M6 CHEESE HEAD SET X 20 LONG	4	Z13-15
13.	M6 LOCKNUT	4	Z23-06

TANCO AUTOWRAP 1070 MODEL C/W LOADING ARM  
 JUNCTION BOX AND CONTROLLER FOR 5 BANK VALVE



FILE NAME 9227L

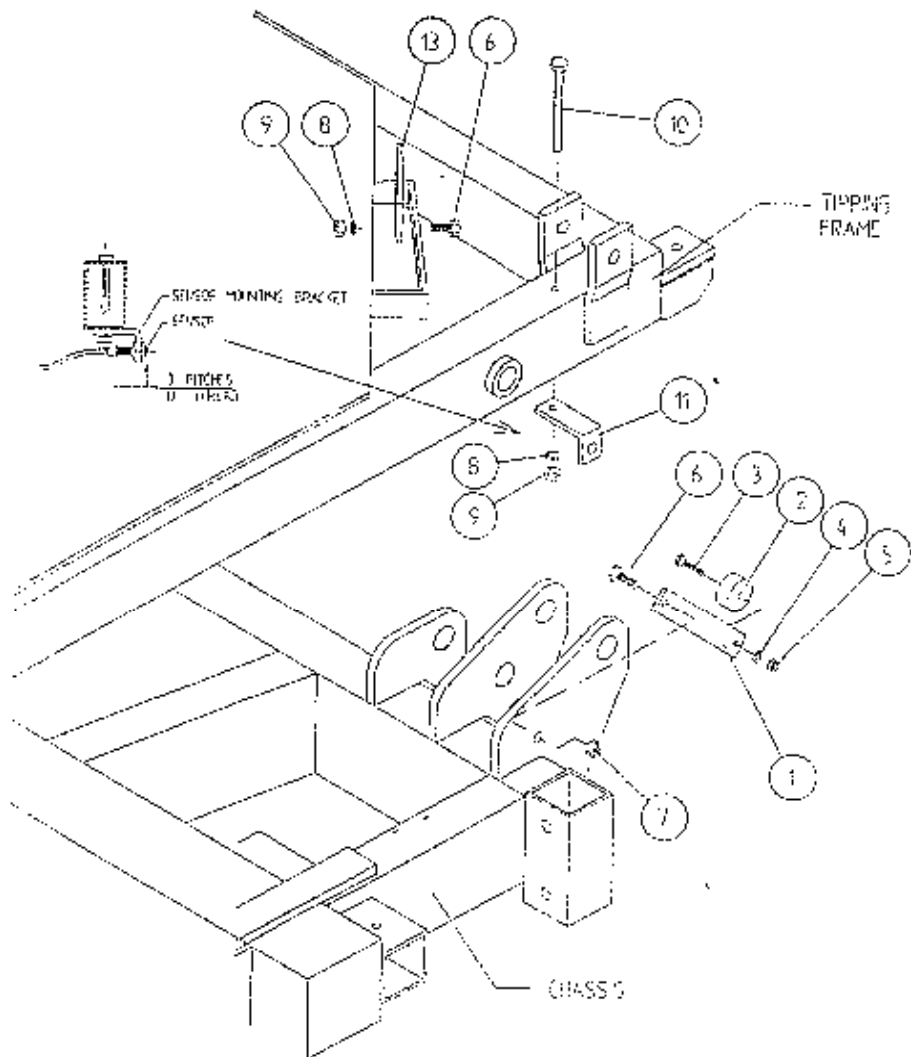
2 2 2

2 2 2

NOTES

A series of horizontal lines for writing notes, spanning most of the page width.



TANCO AUTOWRAP CUT AND START UNITSENSOR AND MAGNET MOUNTING BRACKETSPARTS LIST

ITEM NO.	DESCRIPTION	QTY.	PART-NO.
1.	MAGNET MOUNTING BRACKET	1	WD605-165
2.	MAGNET	1	D6043
3.	M6 HEX HD SET x 30mm LONG	1	Z26-022S
4.	6mm DIA FLAT WASHER	1	Z11-02-06
5.	M6 LOCKNUT	1	Z23-06
6.	M8 HEX HD SET x 25mm LONG	2	Z26-040S
7.	M8 LOCKNUT (NYLOCK)	1	Z23-08
8.	8mm DIA SPRING WASHER	2	Z12-02-08
9.	M8 HEX NUT	2	Z18-08
10.	M8 HEX HD SET x 100mm LONG	1	Z26-057S
11.	SENSOR MOUNTING BRACKET	1	WD605-58
12.	SENSOR MOUNTING FLAT	1	WD605-164

0

0

000

000

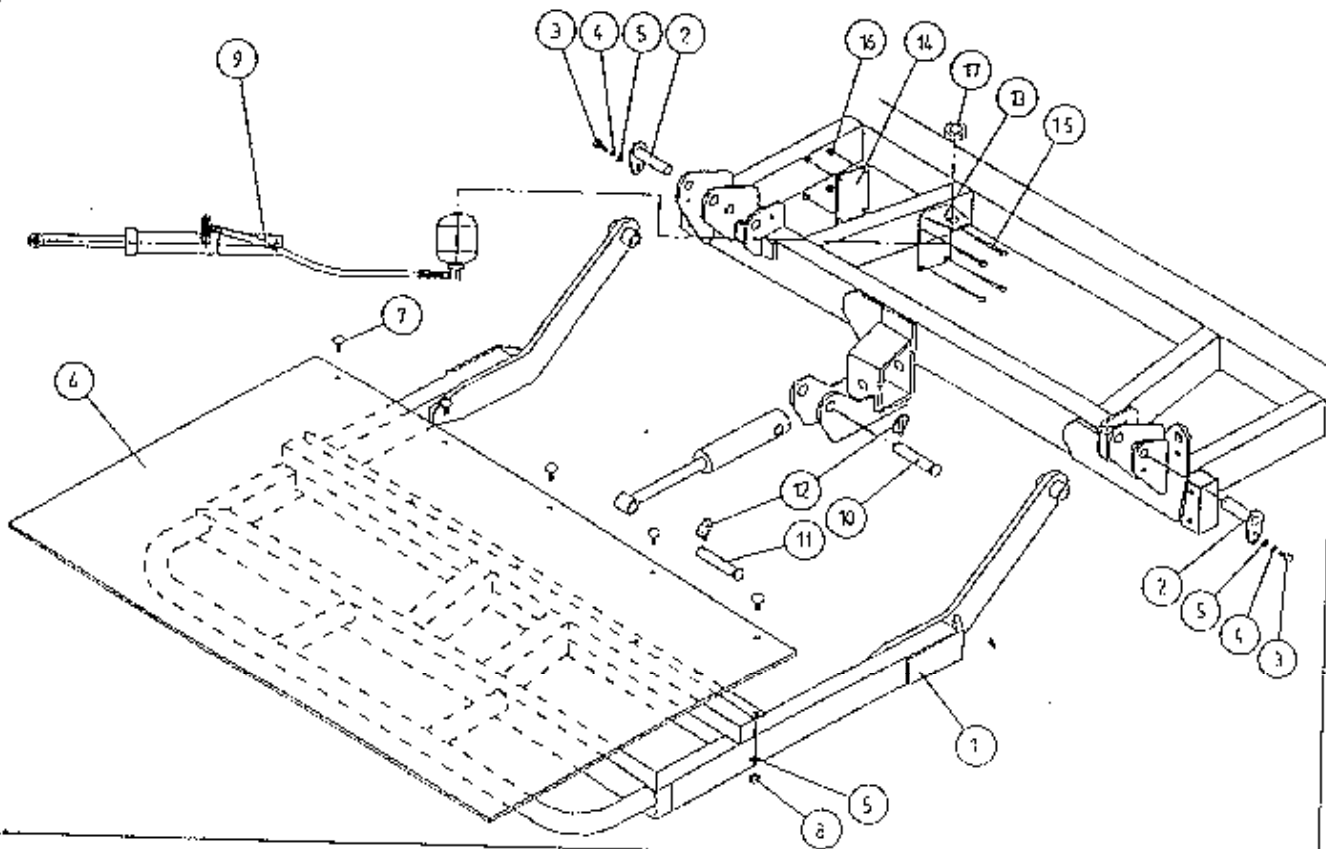
000

33

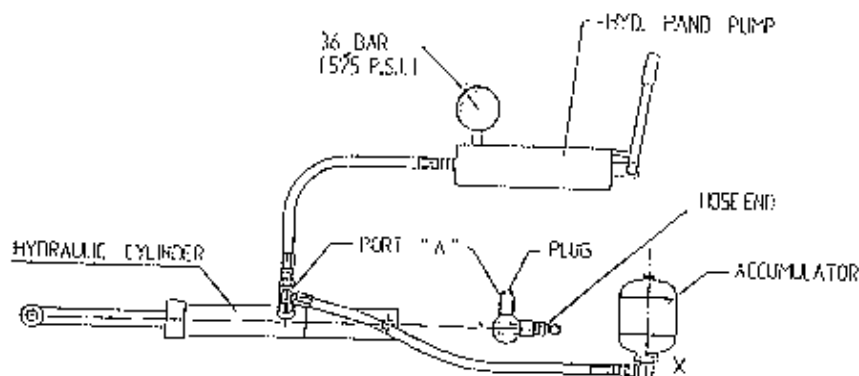
33



# TANCO AUTOWAP HYDRAULIC BALE RAMP



## INSTRUCTIONS FOR RECHARGING AND REDUCING PRESSURE IN HYDRAULIC BALE RAMP CYLINDER



### TO RECHARGE CYLINDER:

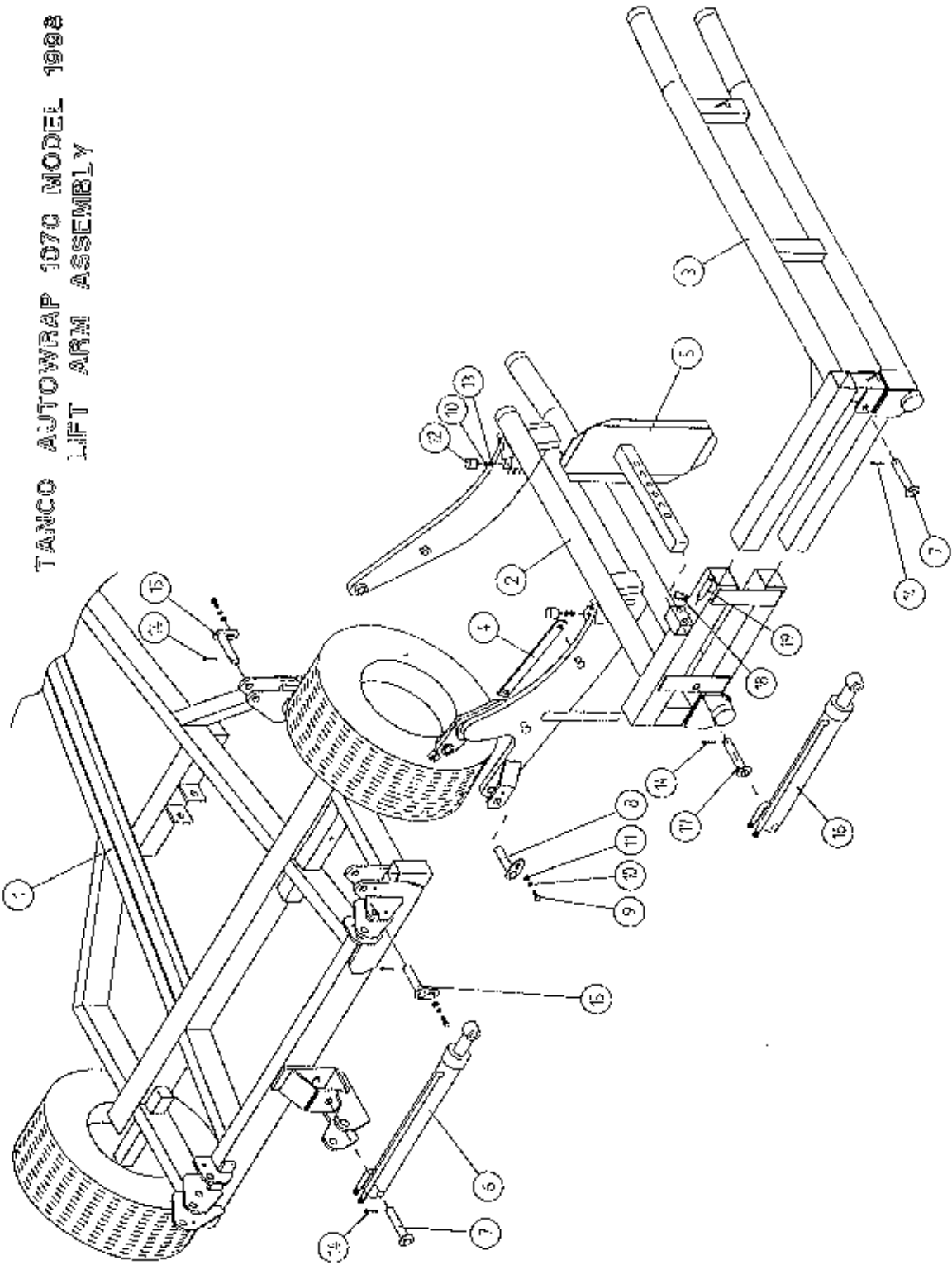
1. REMOVE PLUG FROM PORT "A".
2. CONNECT HOSE FROM HYD. HAND PUMP TO PORT "A".
3. CHARGE CYLINDER TO A PRESSURE OF 36 BAR (525 P.S.I.)
4. BLEED AIR FROM SYSTEM BY SLACKENING HOSE CONNECTION AT BASE OF ACCUMULATOR MARKED X. RETIGHTEN CONNECTION.
5. REMOVE PUMP HOSE FROM PORT "A" AND REFIT PLUG.

### TO REDUCE PRESSURE IN CYLINDER:

1. SLACKEN CONNECTION ON HOSE END JUST ENOUGH TO ALLOW OIL TO BLEED OUT SLOWLY.
2. RETIGHTEN CONNECTION AND CHECK OPERATION OF BALE RAMP AS DETAILED IN FIG 1.
3. REPEAT PROCEDURE UNTIL OPERATION OF RAMP IS CORRECT.

FILE NAME WD66-PLZE

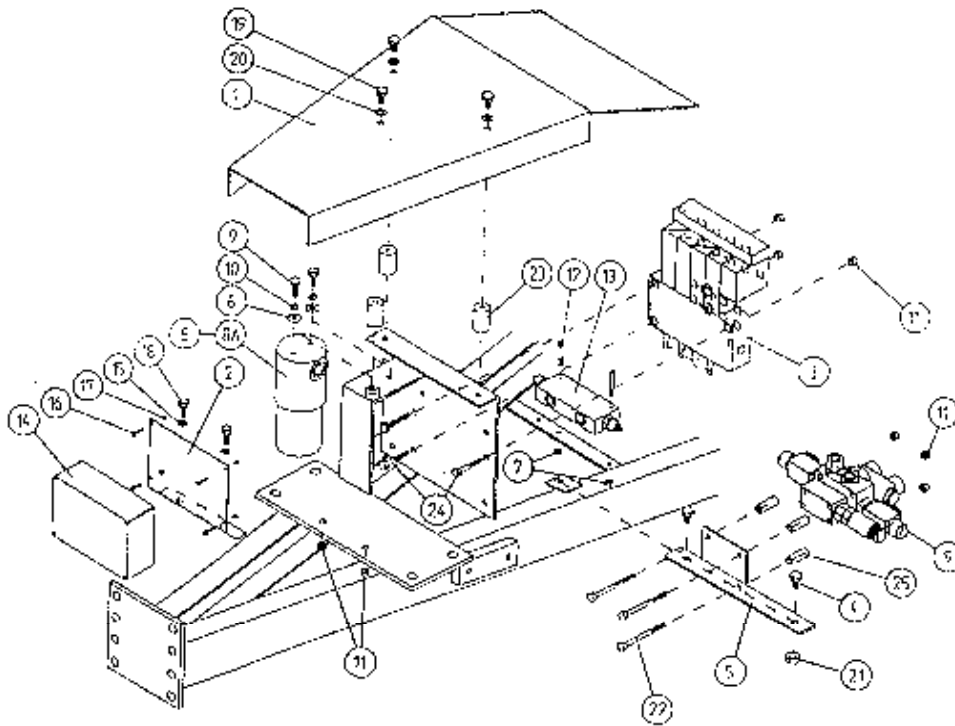
TANCO AUTOWRAP 1070 MODEL 1988  
LIFT ARM ASSEMBLY



FILE NAME: W075-PL1

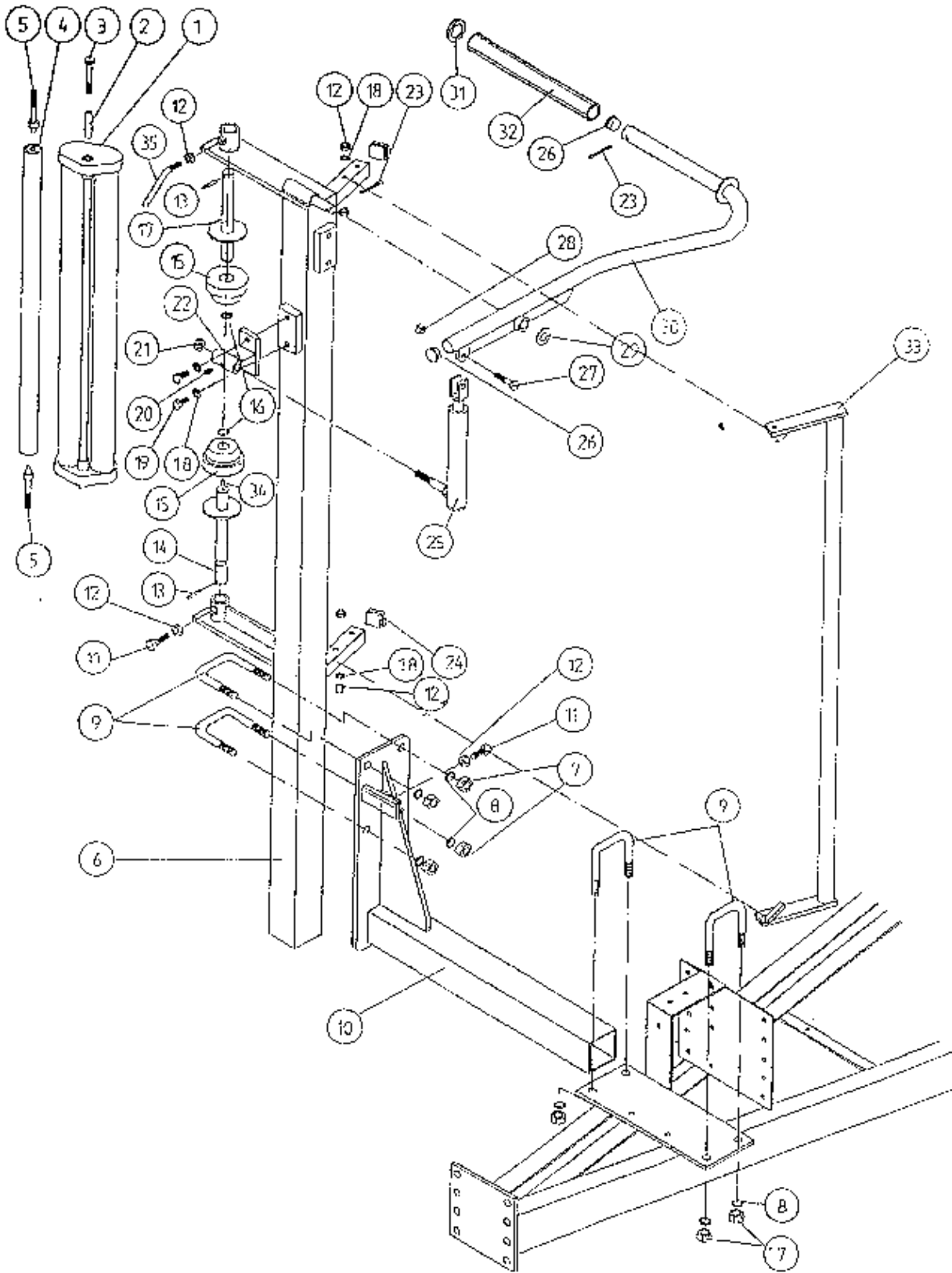
TANCO AUTOWRAP 1070 MODEL

VALVE JUNCTION BOX FILTER & DIVERTER VALVE MOUNTING BRACKET ASSEMBLY



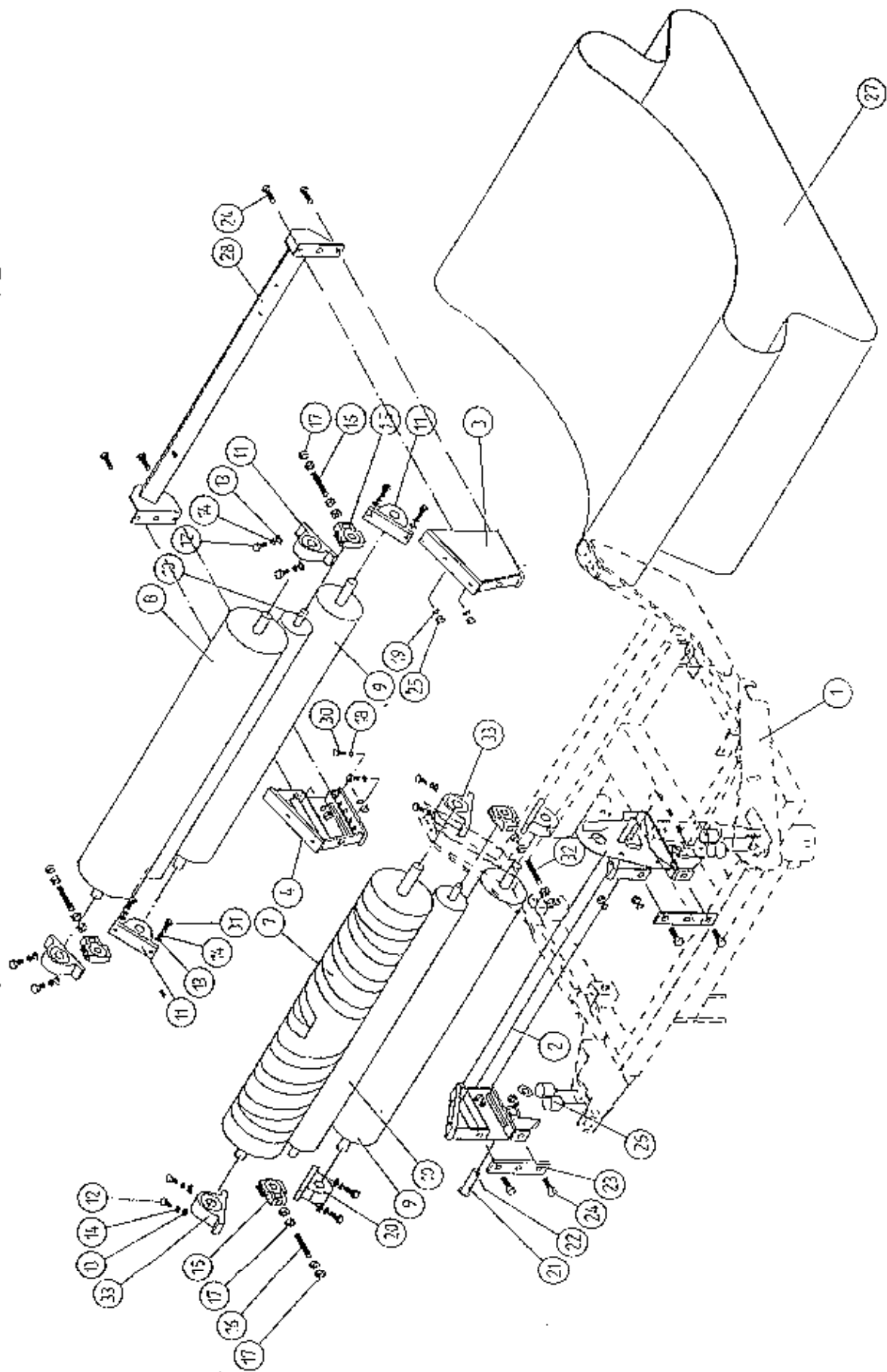
ITEM NO:	DESCRIPTION:	QTY:	PART NO:
1	VALVE COVER PLATE ASSY	1	WD75-VCP
2	JUNCTION BOX MOUNTING PLATE	1	WD66-041
3	4 BANK SOLENOID VALVE	1	Z01-03-A1070
4	MONO BLOCK SOLENOID VALVE	1	Z01-03-ASQ
5	VALVE MOUNTING PLATE	1	WD75-VMP
6	8MM DIA MUD FLAP WASHER	2	Z11-02-081
7	M6 LOCKNUT (NYLOCK)	2	Z32-06
8	OIL FILTER	1	Z01-24-08
8A	OIL FILTER ELEMENT	1	Z01-24-08E
9	M8 HEX HD SET X 25MM	2	Z26-040S
10	8MM DIA SPRING WASHER	8	Z12-02-08
11	M8 LOCKNUTS	5	Z23-08
12	M6 ALLEN HD SOCKET SCREW X 45MM	2	Z13-020-50
13	OVER-CENTRE VALVE	1	Z01-03-10-A8
14	JUNCTION BOX	1	ZDG-0550A
15	8MM DIA FLAT WASHER	4	Z10-02-08
16	M4 ALLEN HD SOCKET SCREW X 16MM	4	Z26-006
17	M4 LOCKNUT	4	Z23-04
18	M8 X 20 HEX SET	2	Z26-039S
19	M10 X 20 HEX SET	5	Z26-060S
20	10MM FLAT WASHER	3	Z12-02-10
21	M10 HEX NUT	2	Z18-10
22	M8 X 100 HEX SET	3	Z26-057S
23	SPACER FOR COVER PLATE	3	WD75-029
24	M8 X 60 HEX SET	3	Z26-047BRS
25	SPACER FOR MONO BLOCK VALVE	3	WD67-100

# TANCO AUTOWRAP TRAILED MODELS FILM DISPENSER SYSTEM



FILE NAME WD67 PL27

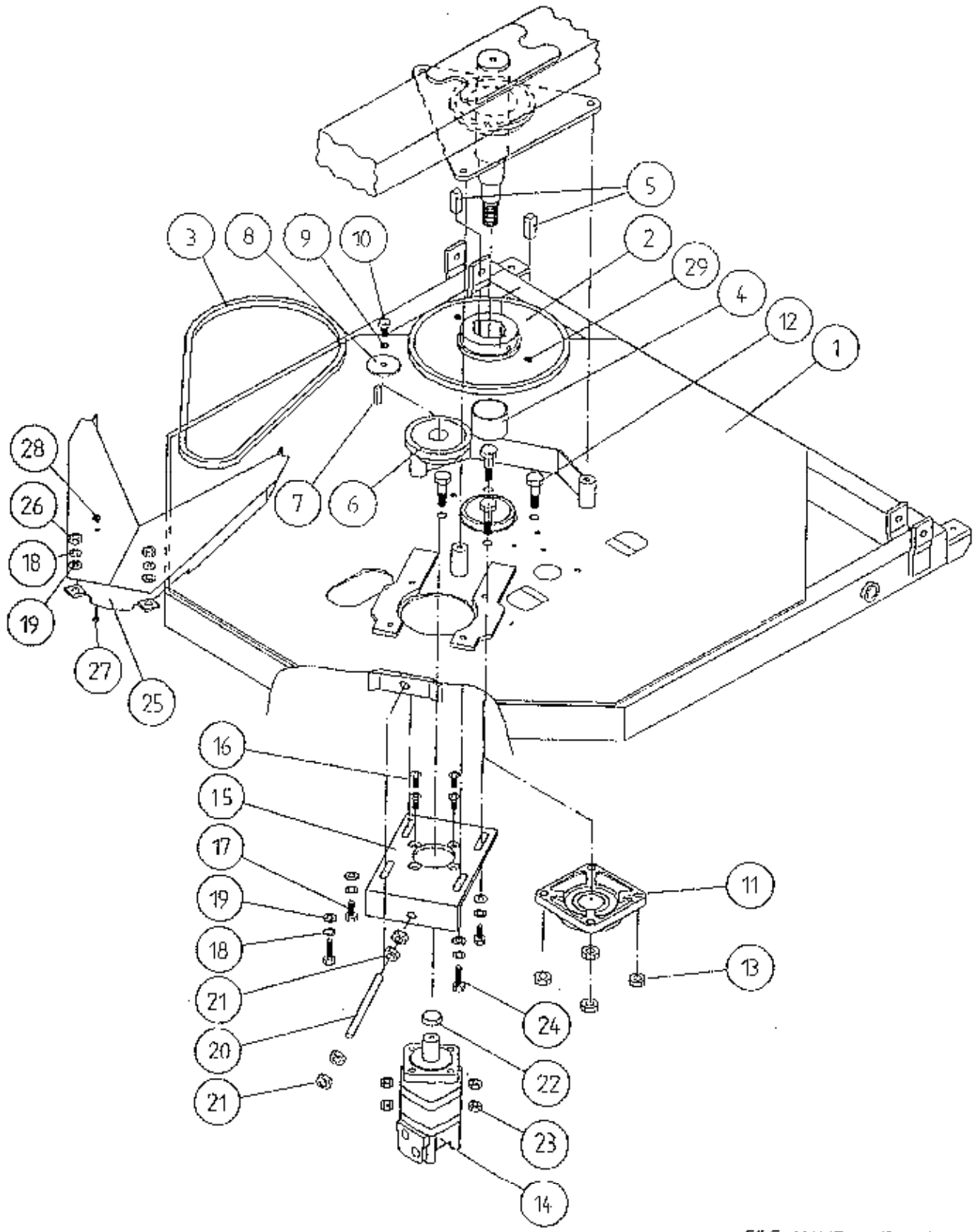
TANCO AUTOWRAP  
BALE BELT ROLLER MOUNTING BRACKETS



FILE NAME WD69-PL30

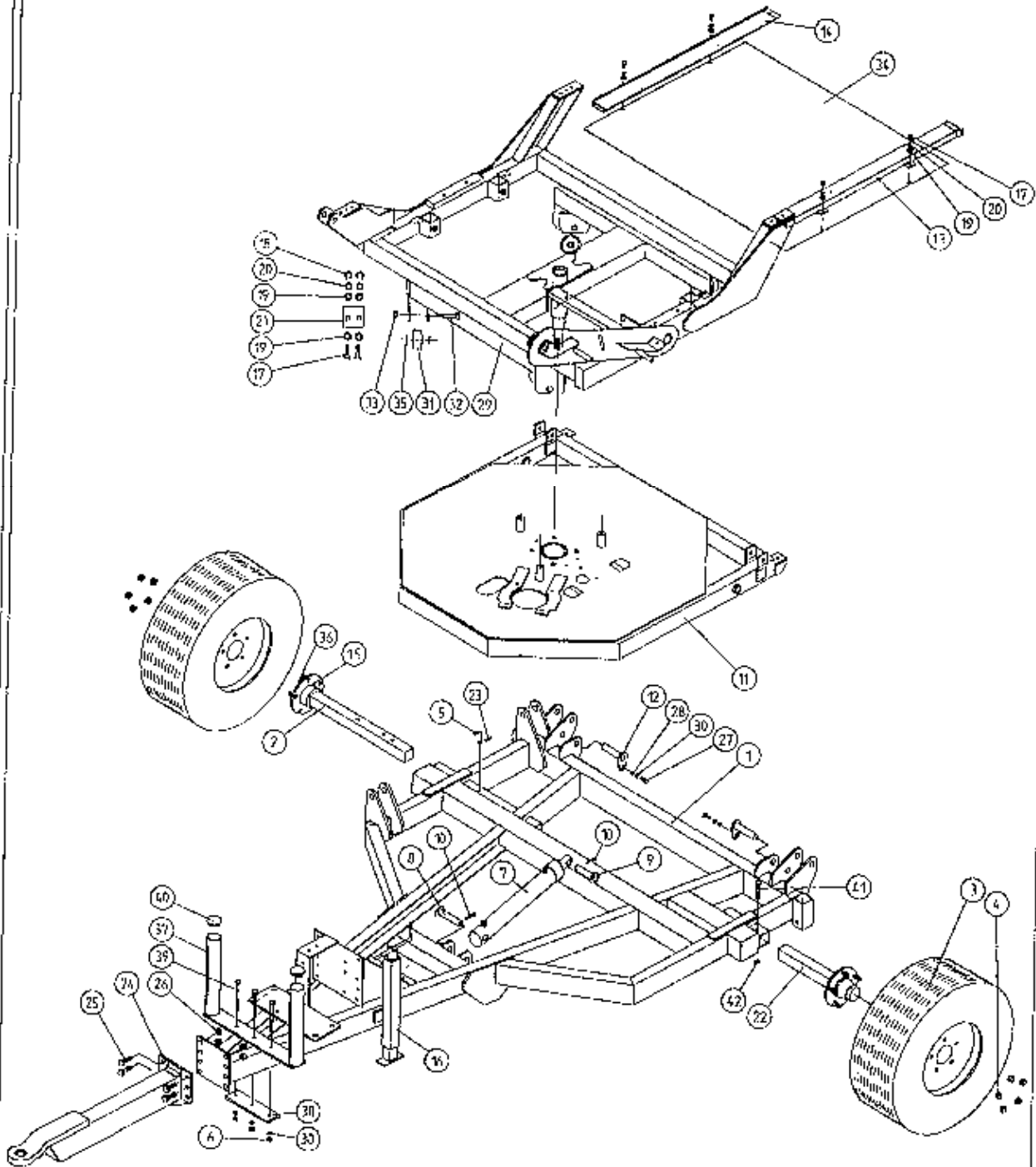
C C C C

# TANCO AUTOWRAP TURNTABLE CHAIN DRIVE ASSEMBLY



FILE NAME: WD66 PL9

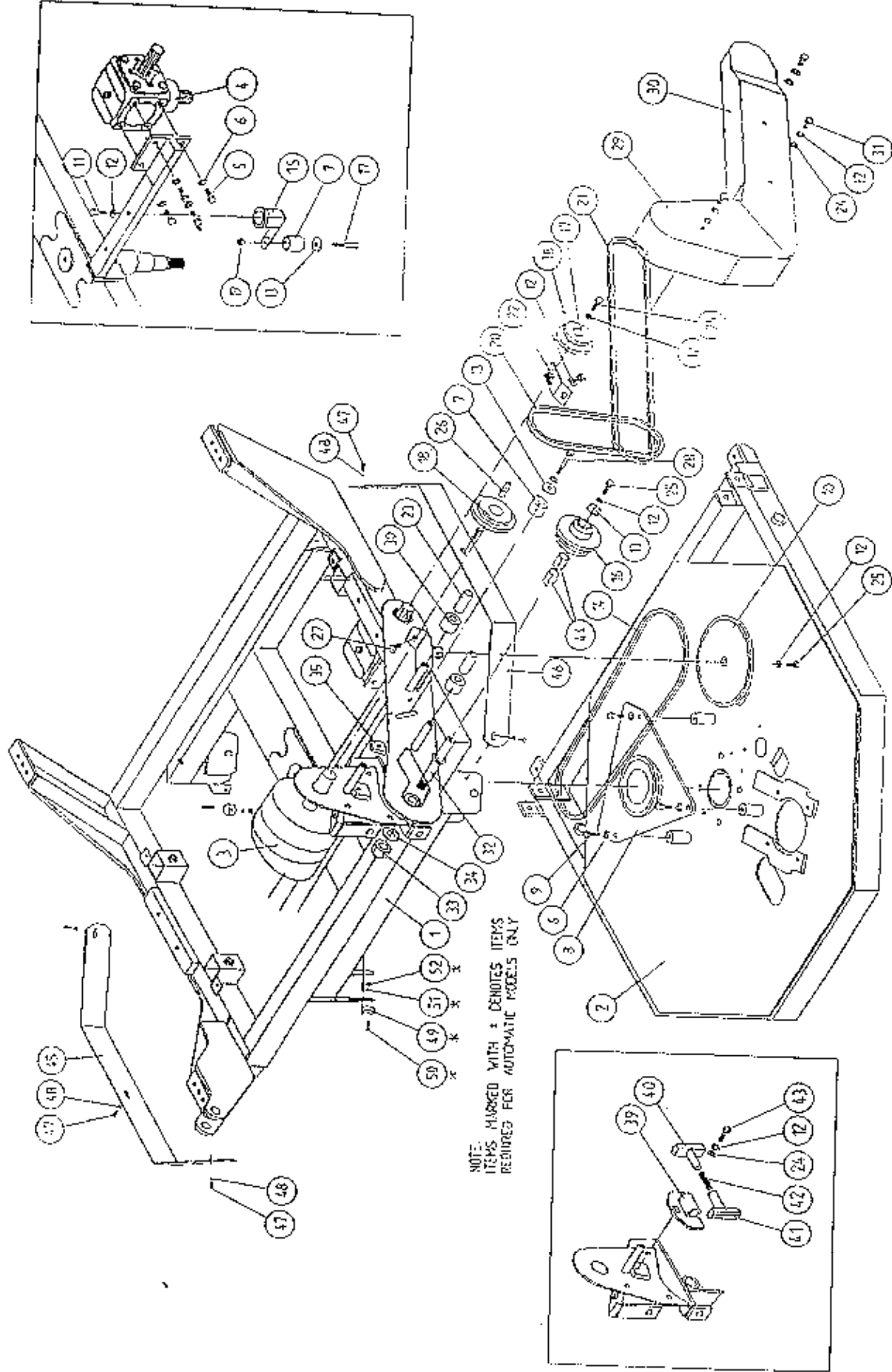
# TANCO AUTOWRAP 1070 MODELS MAIN ASSEMBLY



P1F NAME: W067-PL25

TANCO AUTOWRAP

CONSTANT INDEXING DRIVE ASSY



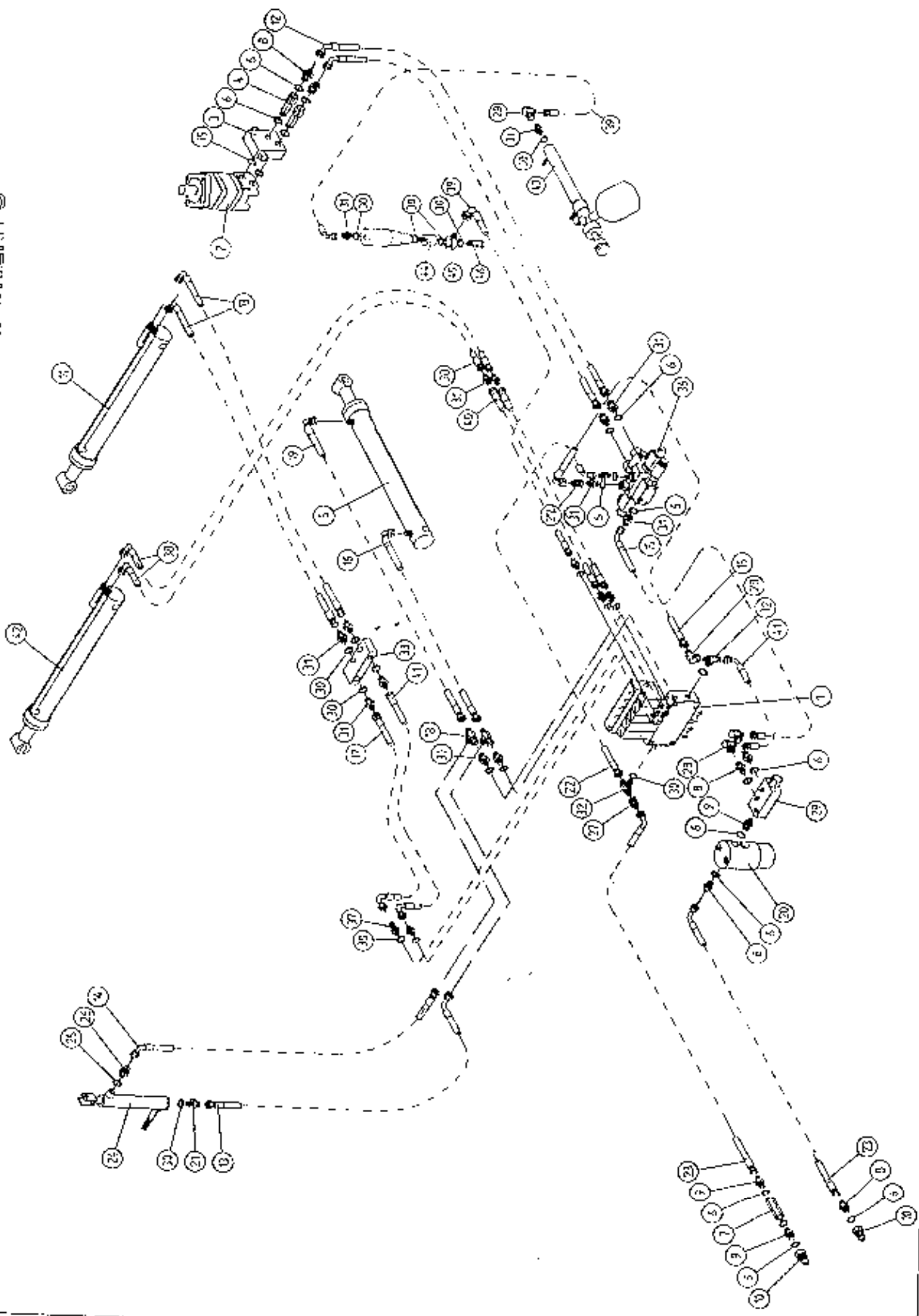


U  
U  
U

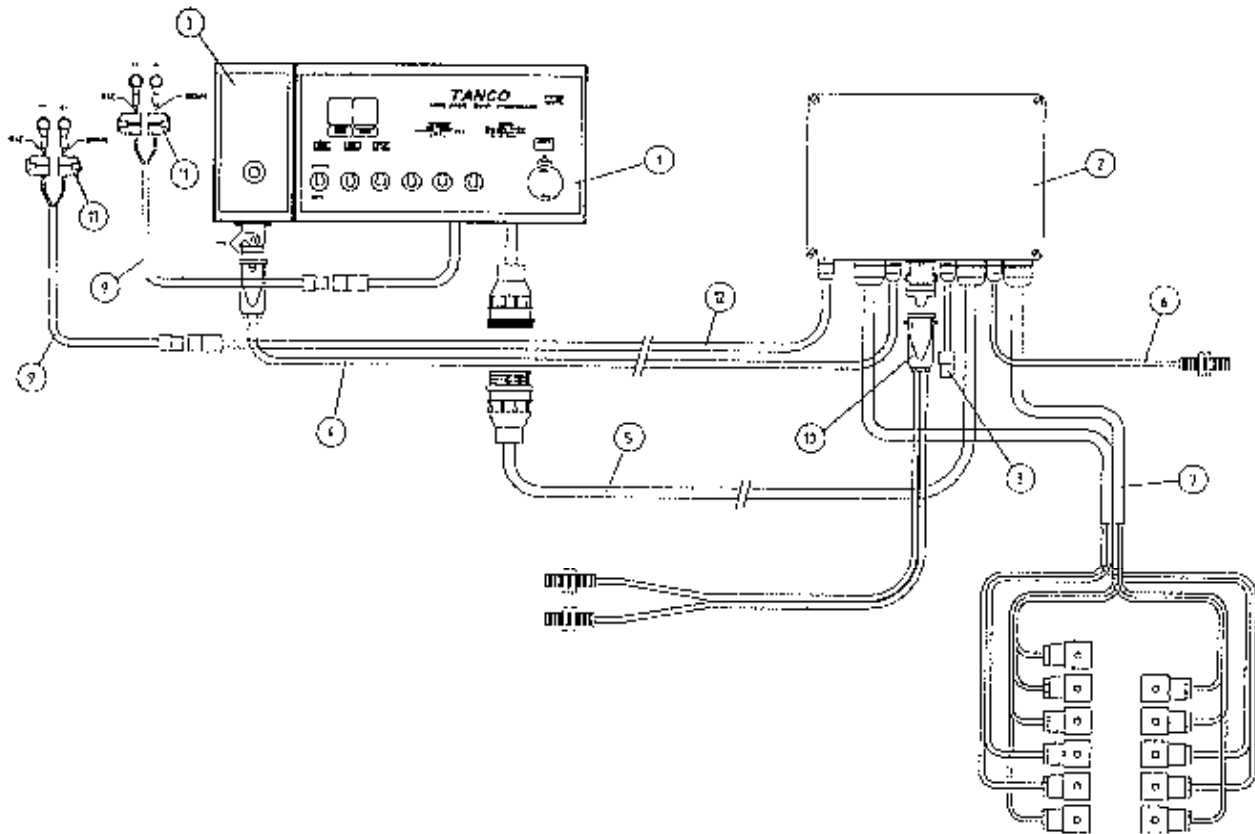
U

U

TANCO AUTOWRAP 1070 MODEL HYDRAULIC COMPONENTS



FILE NAME: W07PL35

**TANCO AUTOWRAP 1070 MODEL****ELECTRICAL COMPONENTS****PARTS LIST**

ITEM NO	DESCRIPTION	QTY	PART-NO.
1	CONTROL BOX	1	D606-110
2	JUNCTION BOX (5 BANK VALVE)	1	ZDG-1070A
3	ADDITIONAL CONTROL BOX FOR 1070 MODEL	1	ZDG-RCB
4	LEAD FOR ADDITIONAL CONTROL BOX C/W HEARTING PLUG.	1	ZDG-CB
5	24 CORE INTER CONNECTING LEAD C/W CONNECTORS	1	D605-24C
6	LIFT ARM SENSOR	1	ZD606-IAS
7	LOOM FOR VALVE C/W HIRCHMANN	1	ZD606-082H
8	SYSTEM PRESSURE LEAD	1	ZD605-070
9	MAIN BATTERY LEAD	2	ZD606-030
10	TWIN SENSOR LEAD C/W HEARTING PLUG	1	D605-7C
11	IN-LINE FUSE	4	ZD606-075
12	MAIN LEAD FOR JUNCTION BOX	1	ZD606-050

3  
3  
3

3  
3